

DO NOT PRINT GREEN 375 DIE LINES.
DIE LINES ARE FOR DIE CUTTING ONLY!

Glowing Key Fob

Installation Instructions

First Use

- Pull and remove plastic tab to activate
- Fob will glow in dim to dark lighting for up to 1 year
- Press and hold button to increase brightness
- Clip to key chain using clasp and/or ring included

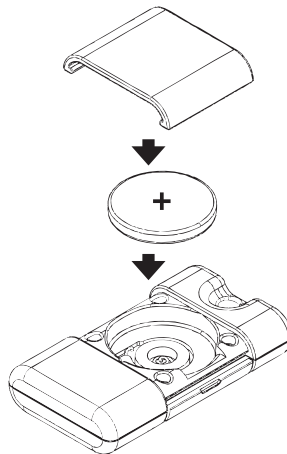
Replacing Batteries

- Remove battery cover from Glow Fob using a small flat head screw driver or similar tool
- Remove battery while noting +/- orientation
- Install new type CR2032 Lithium cell battery

Note: insure proper +/- orientation

Warning: This is not a toy and is not intended for use by children. For adult use only.

Xodus Innovations, LLC
2025 Yore Avenue
Benton Harbor, MI 49022
www.xodusinnovations.com
Made in China



Model # BL300
1 year limited warranty
Patent # 6,992,591
Additional patents pending